



LP0245

**FITTING INSTRUCTIONS FOR LP0245BK LICENCE PLATE BRACKET  
KAWASAKI NINJA 400 2018 (FOR USE WITH STANDARD AND R&G MINI  
INDICATORS (8mm))**

Page | 1



**THIS KIT CONTAINS THE ITEMS PICTURED AND LABELLED BELOW.  
DO NOT PROCEED UNTIL YOU ARE SURE ALL PARTS ARE PRESENT.**

**Please note that the way the kit is packed does not necessarily represent the way of mounting to the bike**

THE PARTS SHOWN MAY BE REPRESENTATIVE ONLY (FOR CLARITY OF INSTRUCTIONS ONLY)

**Digital copies of these instructions are available to download from [www.rg-racing.com](http://www.rg-racing.com)**

**GENERAL TORQUE SETTINGS**

M4 BOLT = 8Nm  
M5 BOLT = 12Nm  
M6 BOLT = 15Nm  
M8 BOLT = 20Nm  
M10 BOLT = 40Nm

Please note that in cases where kits are packed with rubber washers holding the components onto the bolt – *the rubber washers should be thrown away!*

**TOOLS REQUIRED**

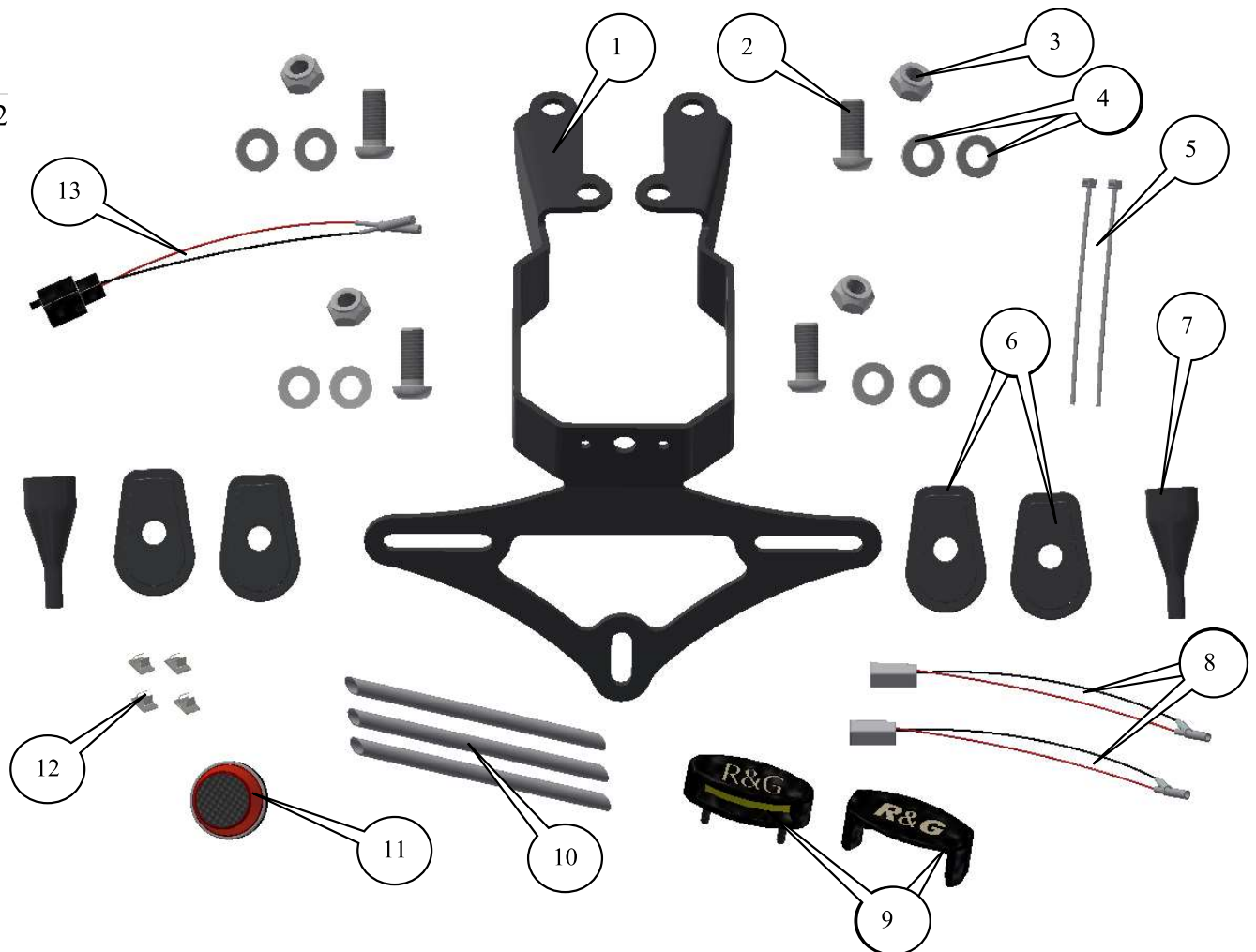
- Set of metric Allen keys to include 3, 4 and 5mm A/F sizes.
- Socket set to include 8, 12 and 13mm A/F socket and wrench.
  - Phillips driver.
  - Electrical pliers/crimps.
  - Small amount of super glue.

R&G Racing  
Unit 1, Shelley's Lane, East Worldham, Alton, Hampshire, GU34 3AQ  
Tel: +44 (0)1420 89007 Fax: +44 (0)1420 87301 [www.rg-racing.com](http://www.rg-racing.com) Email: [info@rg-racing.com](mailto:info@rg-racing.com)



LP0245

Page | 2



**LEGEND**

- ITEM 1 = LICENCE PLATE BRACKET (TB0245) (x1).
- ITEM 2 = M8 x 25mm LONG BUTTON HEAD BOLTS (x4).
- ITEM 3 = M8 NYLOC NUTS (x4).
- ITEM 4 = M8 WASHER (x8).
- ITEM 5 = CABLE TIES (x2).
- ITEM 6 = MINI INDICATOR ADAPTORS (I0039) (x4).
- ITEM 7 = SILICON INDICATOR NUT COVERS (IWC0002) (x2).
- ITEM 8 = MINI INDICATOR CONNECTORS (CON0032) (x2).
- ITEM 9 = LICENCE PLATE ILLUMINATOR ASSEMBLY (LA0002) (x1).
- ITEM 10 = 200mm LENGTH OF HEAT SHRINK (x3).
- ITEM 11 = REFLECTOR (REFL 1) (x1).
- ITEM 12 = CABLE CLIPS (x4).
- ITEM 13 = LICENCE PLATE ILLUMINATOR CONNECTOR (CON0007) (x1).

R&G Racing  
Unit 1, Shelley's Lane, East Worldham, Alton, Hampshire, GU34 3AQ  
Tel: +44 (0)1420 89007 Fax: +44 (0)1420 87301 [www.rg-racing.com](http://www.rg-racing.com) Email: [info@rg-racing.com](mailto:info@rg-racing.com)



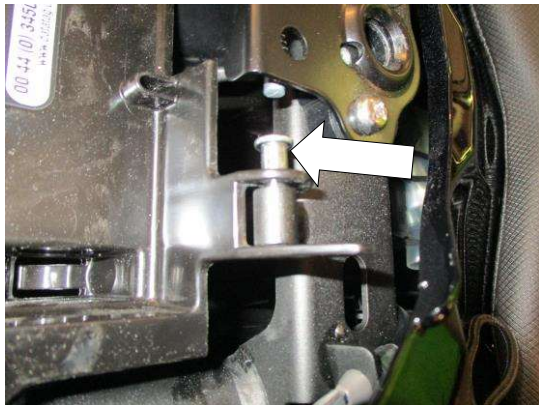
LP0245



Picture 1



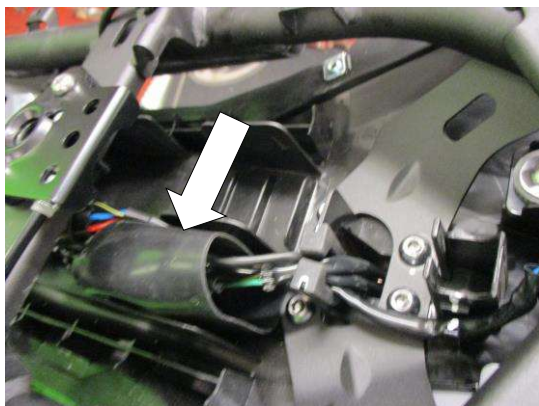
Picture 2



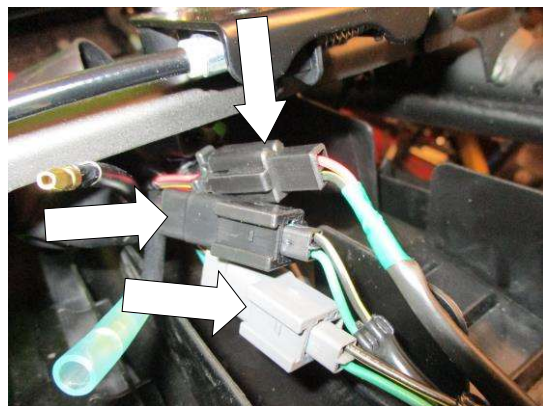
Picture 3



Picture 4



Picture 5

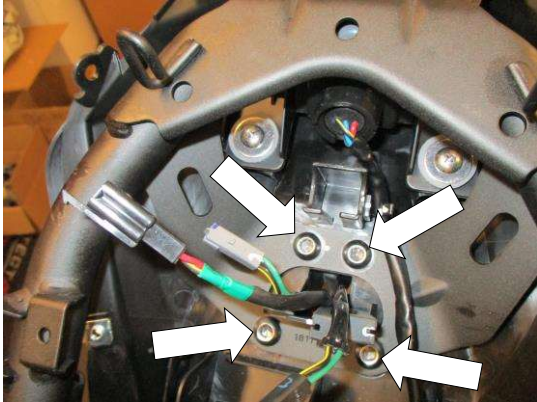


Picture 6





LP0245



Picture 7



Picture 8



Picture 9



Picture 10



Picture 11



Picture 12



LP0245

Page | 5



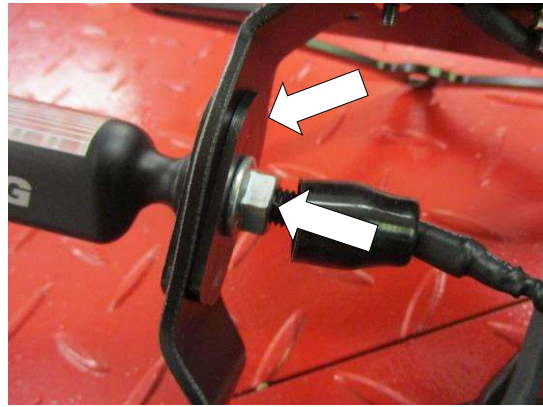
Picture 13



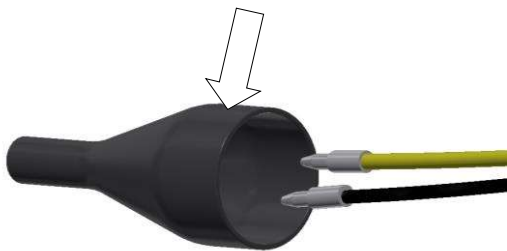
Picture 14



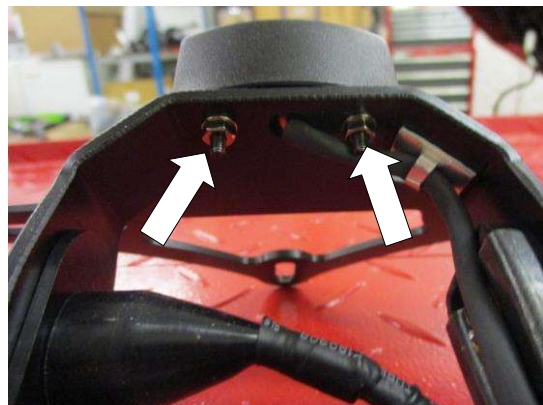
Picture 15



Picture 16



Picture 17



Picture 18





LP0245

Page | 6



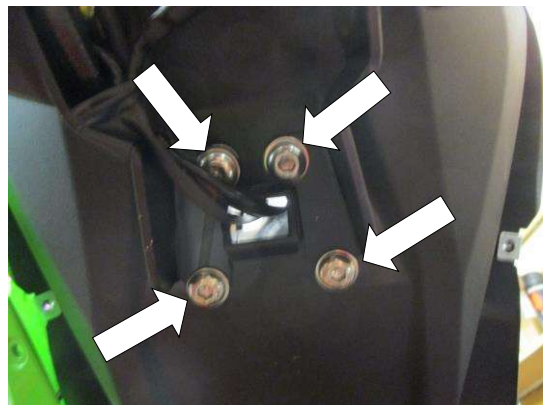
Picture 19



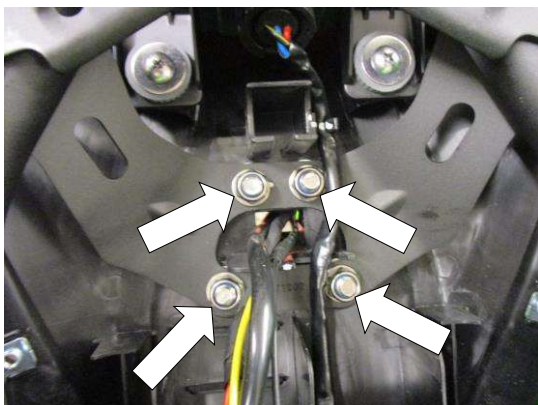
Picture 20



Picture 21



Picture 22



Picture 23



Picture 24



LP0245

Page | 7

### FITTING INSTRUCTIONS

- To fit the R&G tail tidy, first remove the seat using the key as shown in picture 1.
- Remove the two 'R' clips indicated in picture 2 and remove the two pins indicated in picture 3.
- Remove the under-seat tray cover as shown in picture 4.
- Slide the rubber plug socket cover along the wiring loom to give access to the indicator and licence plate illuminator as indicated in picture 5.
- Disconnect the three plug sockets as arrowed in picture 6 (indicators and licence plate illuminator).
- Remove the four bolts arrowed in picture 7, while supporting the original licence plate bracket from underneath.
- Carefully lower the original licence plate bracket while feeding the wiring through the hole in the under-tray.

#### If reusing the original indicators

- Remove the screw arrowed in picture 8.
- Remove the indicator clamp bracket as shown in picture 9.
- Remove the indicator spreader plate as shown in picture 10.
- Gently squeeze the indicator stem and remove the indicator
- Repeat the above steps to remove the opposite indicator.
- Fit the indicators into the new licence plate bracket (item 1) and secure as shown in pictures 11,12,13, and 14.

#### If using the mini indicators

- To fit the R&G Mini Indicators (R&G mini indicator product code RG370 for bulb type and RG371 for LED type or RG372 for Aero Style led type).
- Position the two indicator adaptors (item 6 –I0039) onto the wiring of each indicator, ensuring the sides facing each other have the raised centre profile, before fitting the flanged nut supplied, as shown in pictures 15 and 16.
- Feed the indicator wiring through the nut/wire cover (item 7) as shown in pictures 16 and 17 (it helps if a small amount of liquid detergent is used) and position the nut cover over the nut.
- Fit one length of heat-shrink (item 10) to the wires of each indicator.
  
- Fit the R&G licence plate illuminator (item 9) as shown in pictures 18 and 19, please note you will have to fit the light shroud and use a small amount of adhesive to hold it in position. Fit one length of heat-shrink (item 10) to the wire. It is a good idea to reconnect to the wiring loom using the supplied connector (item 13) to check at this stage (if illumination fails, swap the bullet connections around).
- Tidy the wiring to the licence plate bracket using the supplied clips and cable ties (items 5 and 12).
- Offer the new licence plate bracket into position while feeding the wiring through the hole in the under-tray as shown in pictures 20 and 21.
- Fit the four button head bolts with washers (items 2 and 4) through the four holes in the new licence plate bracket as shown in picture 22.
- Secure using the four nuts with washers (items 3 and 4) as shown in picture 23, please ensure the wires are not crushed.

R&G Racing

Unit 1, Shelley's Lane, East Worldham, Alton, Hampshire, GU34 3AQ

Tel: +44 (0)1420 89007 Fax: +44 (0)1420 87301 [www.rg-racing.com](http://www.rg-racing.com) Email: [info@rg-racing.com](mailto:info@rg-racing.com)